



MODULAR REGULATOR & PULSE VALVES

R-701

Pressure Regulator

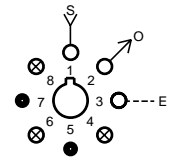
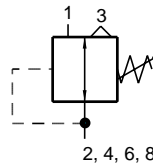


Features:

- Multiple porting speeds piping
- Knurled knob for fast, accurate adjustments - no tools needed
- Self-relieving

Performance:

Flow (SCFM @ 100 psig).....12
 Pilot pressure (psig) minimum..... -
 Temperature.....32° to 180° F
 Working pressure.....0 to 150



Description:

R-701 is a self-relieving, adjustable pressure regulator with multiple output ports. Pressure can be piped directly from ports 2, 4, 6 and 8. Eliminates need for additional fittings. Unused output ports should be plugged.

R-711

Pulse Valve

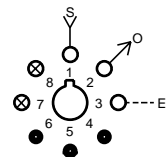
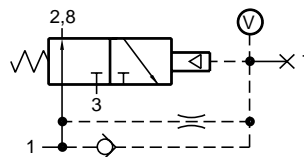


Features:

- Multiple porting speeds piping
- Micro Gap Construction - snap action and no blow by
- Complete function in one module

Performance:

Flow (SCFM @ 100 psig).....10
 Pilot pressure (psig) minimum.....40
 Temperature.....32° to 180° F
 Working pressure.....40 to 150



Description:

R-711 is a 3-way, normally-OPEN, self-piloted valve that closes shortly after being pressurized and remains closed until signal pressure is exhausted. It converts a continuous input signal into a single pulse of approximately 50 milliseconds. Port 7 is provided for additional volume for extending pulse duration and should be plugged if not used.